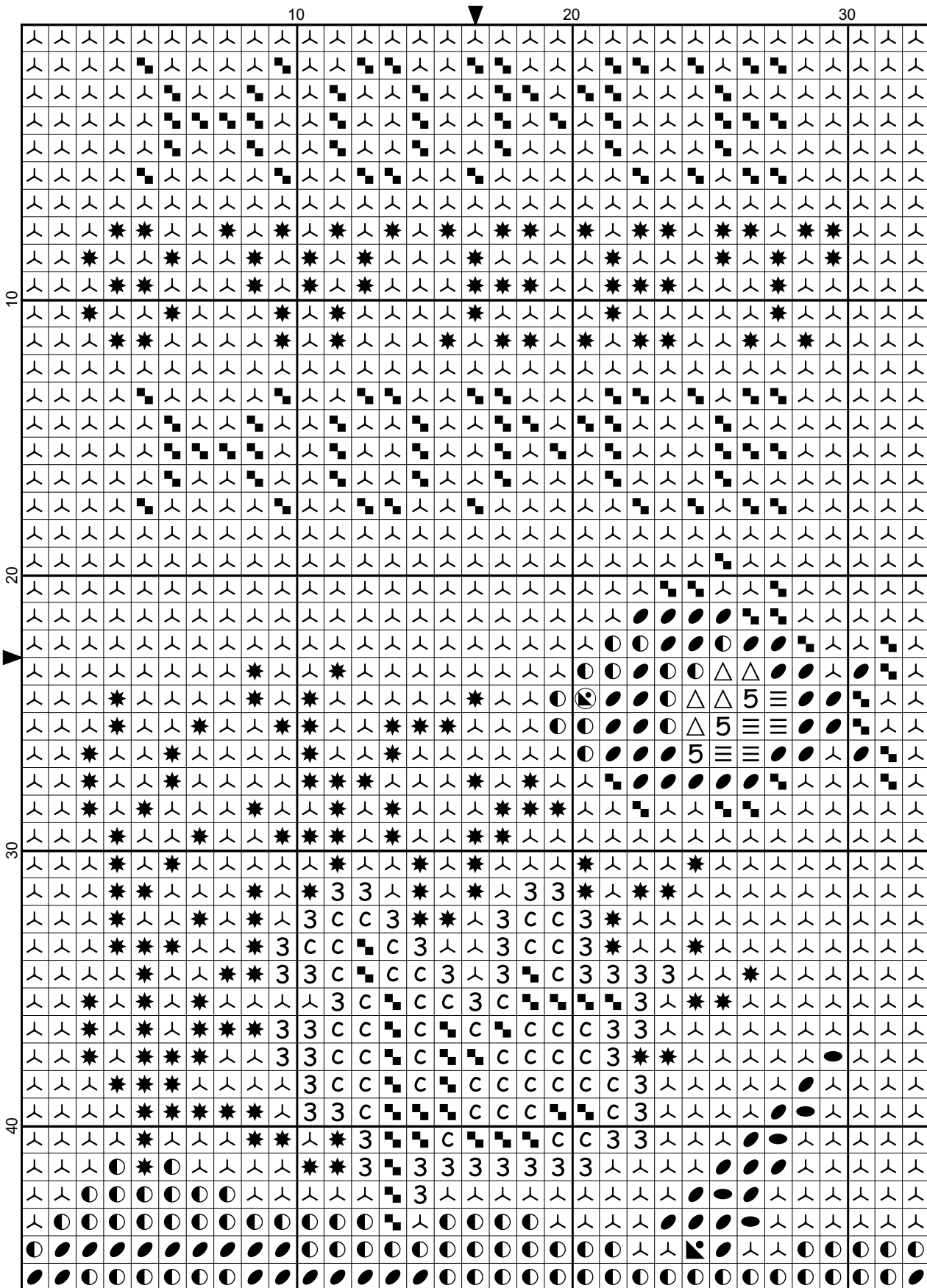


Ocean Sampler by Yvette M




Ocean Sampler

Author: Yvette M
Company: Double the Fun Crafts
Copyright: 2019
Website: <https://doublethefuncrafts.com>
Fabric: 40 count silk gauze
Grid Size: 33W x 46H
Design Area: 0.83" x 1.15" (33 x 46 stitches)



Legend:

	[1] DMC-676	ANC-891	old gold - lt
	[1] DMC-3722	ANC-1027	shell pink - md
	[1] DMC-436	ANC-1045	tan
	[1] DMC-3781	ANC-1086	mocha brown - dk
	[1] DMC-840	ANC-832	beige brown - md
	[1] DMC-3816	ANC-876	celadon green
	[1] DMC-225	ANC-968	shell pink - ul vy lt
	[1] DMC-152	ANC-894	shell pink - md lt
	[1] DMC-3042	ANC-870	antique violet - lt
	[1] DMC-3813	ANC-875	blue green - lt
	[1] DMC-3753	ANC-1096	antique blue - ul vy
	[1] DMC-Ecru	ANC-2	ecru

French Knots:

 DMC-3781 mocha brown - dk

I created this tiny sampler for my Beachfront mansion, using some elements I found while browsing the web and my own imagination for other elements.

Please do not sell this pattern as it is a "Free for Personal Use" pattern.

Pattern size: 33 stitches x 46 stitches.

Approximate finished size of stitching on 40 count fabric: 0.83" x 1.15" (2.16 cm x 2.92 cm)

To determine the finished size using another count fabric, simply divide number of stitches across and down the pattern by the number of squares in your fabric.

For example: on 22 count fabric: $33/22=1.5$ (or 1/5") and $46/22=2.09$ (or 2.09").

Each square on the pattern represents one stitch. I recommend using 2 strands of floss for fabrics with a count of less than 32, and 1 strand for 40 count fabric up to 60 count. If using 60 count or higher, I recommend using a thin silk thread. 60 count can definitely be done with DMC or Anchor floss, but the stitching can be a bit tight, so most people recommend going with a thinner silk thread.

My patterns have been designed with an overlap of two rows at each page break if it is larger than one page. The overlap rows are shown in grey and are not meant to be stitched. These rows are only to help guide you to the next page of the graph and are duplicated in the original colors on the next page.

I use Tent (also called Continental) and Basketweave stitches to complete my rugs. I use these stitches primarily because I have read that it helps to keep the projects square when stitching them and prevents the project slanting to the side due to stitches pulling. If you have never done Tent or Basketweave stitch, I suggest you do a search on the internet as there are many sites that describe these stitches better than I could. A site that I found very useful when learning was Needlepointteacher and the two pages that describe these stitches can be found at these links:

[<https://www.needlepointteacher.com/stitches/numbered-a-b/basketweave/>](https://www.needlepointteacher.com/stitches/numbered-a-b/basketweave/) and [<https://www.needlepointteacher.com/stitches/c/continental/>](https://www.needlepointteacher.com/stitches/c/continental/)

It is recommended that you block your pattern after stitching, to help you make sure your finished item is square, with straight edges. I block my project before I finish the edges off so that I have some of the gauze fabric to use to pin while I am blocking. Therefore, it is a good idea to allow at least 1 - 1.5 inches (2.5 - 4 cm) of extra fabric all around your project.

To block my project, I pin the item down using thumb tacks, making the edges as straight as I am able. I then steam it with my iron on the steam setting, held just above the item, but not touching it. I then let it dry and adjust my edges by adding more thumb tacks, while pulling the edges to make them straight and re-steam. Continue these two steps as often as you like until you are satisfied with the edges.

While every effort has been made to ensure there are no errors in the pattern, the odd one may slip through my meticulous editing process. I cannot be held responsible for any unforeseen errors.

Thank you so much for purchasing my pattern and I truly hope you have a lot of fun stitching it. You can also find some tips and tricks regarding stitching and finishing on our blog at <https://doublethefuncrafts.com/yvettes-petitpoint-blog> and click on the categories "Rug Finishing Tips" and "Stitching Tips and Tricks". There are also some downloadable tutorials located here: <https://doublethefuncrafts.com/tutorials.html>

If you stitch this pattern, I would love to see your finished project. You may email me at yvettesminis@yahoo.com to show the picture to me. If you give permission, I would also like to post a photo of your finished piece in our Gallery.

When stitching this piece, allow at least 1/2" (1.25 cm) extra fabric around all sides for the purpose of mounting it to your backing. I used an acid-free matboard for my backing, cut slightly smaller than my frame. This is to allow space for the fabric. I then use Elmer's All-purpose washable glue stick on the back of the matboard and carefully

wrapped the extra fabric around the board to glue it to the back of the board.

If you have any questions about how to stitch or mount the project, please don't hesitate to email me at yvettesminis@yahoo.com and I will be happy to try to help.

Yvette

Yvette